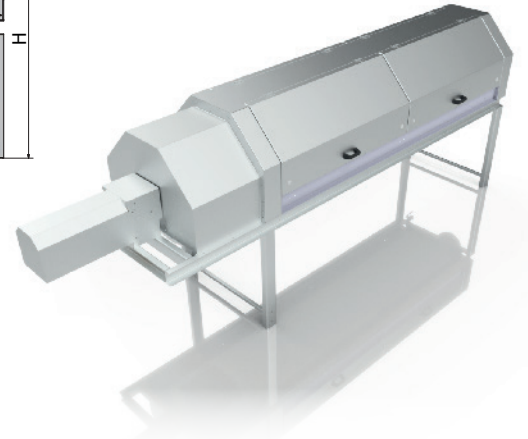
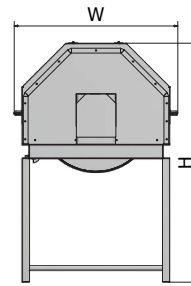
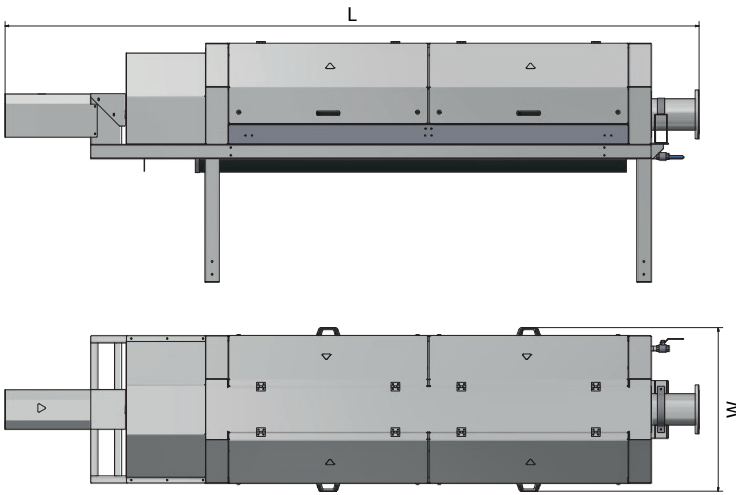


OFFAL SEPARATOR OD30

In many applications, offal from killing and evisceration departments are conveyed through floor gutters using re-circulated water. Offal Separator is used to separate conveying water from offal. The separation is made by a rotating drum with a perforated screen. The drum length is selected according to type of offal and capacity. The separator is suitable for separating both feathers and soft offal.



Features:

- Rotating drum diameter : 800 mm
- Rotating drum hole diameter : 2 mm
- Inlet pipe diameter : 169 mm

| | | 6,000 bph | 12,000 bph |
|--------------------------|----|--------------|---------------|
| Length (L) | mm | 4,830 | 5,830 |
| Width (W) | mm | 1,140 | 1,140 |
| Height (H) | mm | 1,665 | 1,665 |
| Drum length | mm | 3,000 | 4,000 |
| Electric power installed | kW | 1 x 3 kW | 1 x 3 kW |

